



AL.12.11/..



- ▶ **high load-bearing capacity**
- ▶ **high edge protection**
- ▶ **aesthetically pleasing**

FEATURES

punched bearing legs guarantee best connection to the subgrade/covering.

APPLICATIONS

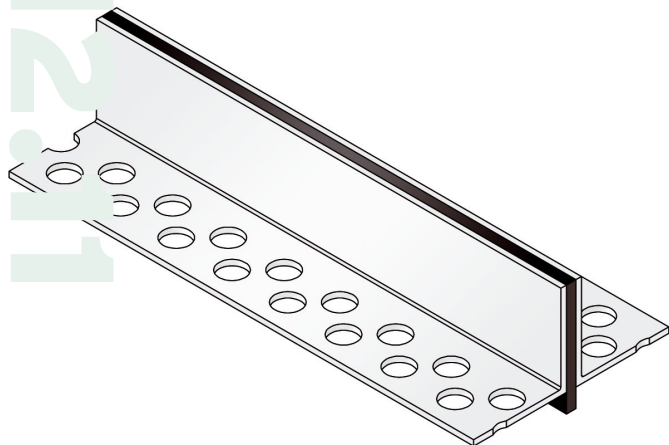
shopping centres, railway stations, airports, residential, office and administration buildings

MATERIAL

aluminium, EVA foam material in the central space

COVERING TYPES

screed, natural and stone slabs



Technical data

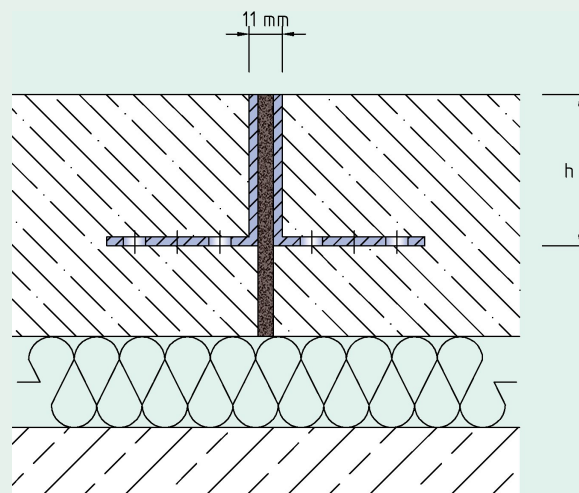
Movement horizontal:	2 mm (±1 mm)
Visible width:	11 mm
Material/sheet thickness:	t = 3 mm
Load rating:	wheel load 600 kg up to Ø 150 mm, B = 100 mm
Supply length:	3 mtr
Color of flexible insert:	black or grey

Designs

Article No.	Profile height (h)
AL.12.11/20	20 mm
AL.12.11/30	30 mm
AL.12.11/40	40 mm
AL.12.11/50	50 mm
AL.12.11/60	60 mm
AL.12.11/80	80 mm
AL.12.11/100	100 mm
Special heights on request.	

Notes

These profiles are supplied complete with all fittings (see www.buprofile.de).



Subject to technical change without notice.